

**Product:**

**Compact Seal HD - Automotive Water Pump seal**

The compact seal HD (Heavy Duty) for automotive water pump applications is developed with extreme durable sliding materials to withstand the heavy duty application conditions with a good sealing performance.

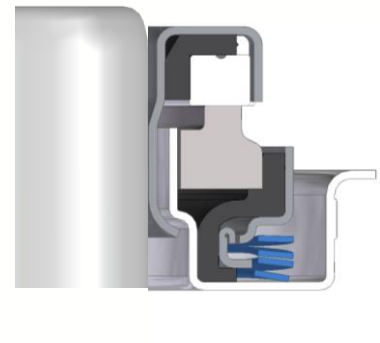
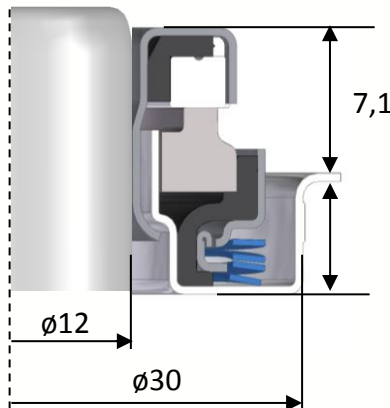
### Assembly dimensions:

Item	Range	Unit
Medium	Coolant / water solution	[-]
Coolant Mixture	40 - 60	%
Pressure - nominal	0 till 0,2	MPa.g
Pressure – peak	-0,1 till 0,3	MPa.g
Temperature - nominal	-20 till +120	°C
Temperature - peak	-40 till +140	°C
Speed - nominal	0 - 7.000 / 5250*	Min <sup>-1</sup>
Speed – peak	10.000 / 7500*	Min <sup>-1</sup>
Sliding materials	SiC / SiC	[-]
Elastomer materials	HNBR	[-]

Item	Range	Unit
Shaft diameter	12/16	mm
Shaft roughness	6,3	µmRz
Shaft hardness	>50	HRC
Bore diameter	30/36*	mm
Bore roughness	1,6	µmRa
Total height	13/14*	mm
Mounting depth	5,5/6,0*	mm

\* 16mm shaft application.

\* 16mm shaft application.



*Developing small things that make a big difference.*